
Community Schools In Duluth

Myers-Wilkins Elementary
Lincoln Park Middle School
Denfeld High School

Amy Worden, Principal
Brian Kazmierczak, Principal
Tom Tusken, Principal

Dani Smilanich, Site Coordinator
Rachel Thapa, Site Coordinator
Cortnie Bain, Site Coordinator



**Duluth Community
School Collaborative**



**Duluth Community
School Collaborative**

*All Modules and more resources are
available on the [Duluth Community
School Collaborative website at
www.DuluthCSC.org](http://www.DuluthCSC.org)*

Topics: Learn at your own pace

This full slide deck includes all 4 modules

1. What is a Full-Service Community School?
2. History of Full-Service Community Schools in Duluth
3. The 4 Pillars of Full-Service Community Schools
4. Where You Belong in Full-Service Community Schools in Duluth

Introduction to Full-Service Community Schools

Module 1 of 4



**Duluth Community
School Collaborative**

1. What is a Full-Service Community School?
 2. 4 Pillars
 3. 7 Guiding Principles
 4. Theory to Practice in Duluth Community Schools
 5. Learn More: Additional Resources
-

A Full-Service Community School is...

- A public school--the hub of its neighborhood--uniting families, educators, and community partners to provide all students with top quality academics, enrichment, health and social supports, and opportunities to succeed in school and in life.
- Both a place and a set of partnerships.
- A national model.



Community Schools are Built on Four Pillars

**Collaborative
Leadership
and Practices**

**Integrated
Student
Supports**

**Family and
Community
Engagement**

**Expanded and
Enriched
Learning
Opportunities**



4 Pillars Video



[Link to Module 3:
The Four Pillars in
Duluth](#)

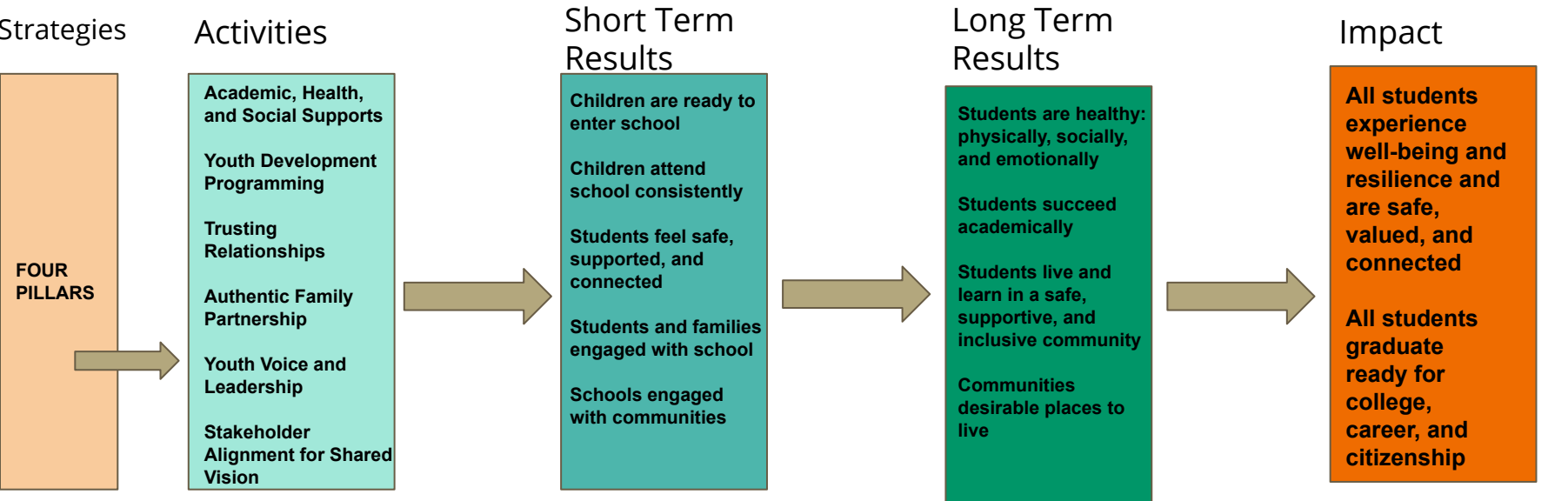
7 Guiding Principles of Community Schools

- Pursue **Equity**
- Invest in a **Whole-Child Approach** to Education
- Build on **Community Strengths** to Ensure Conditions
- Use **Data and Community Wisdom** to Guide Partnerships, Programs, and Progress
- Commit to **Interdependence** and Shared Accountability
- Invest in Building **Trusting Relationships**
- Foster a **Learning Organization**



[Learn more!](#)

Theory to Practice in Duluth Community Schools



[Link to Community school Results-Based Logic Model](#)

Learn More: Additional Resources



**Duluth Community
School Collaborative**

- [Community Schools Playbook](#)
- [How to start a Community School](#)
- [Community School Standards](#)
- [A Rationale and Results Framework](#)
- [Community School News](#)
- [National Community School Models](#)

History of Full-Service Community Schools in Duluth

Module 2 of 4



**Duluth Community
School Collaborative**

1. 1998 - 2001 “The Beginnings”
2. 2001 - 2010
“After-School/Summer
Program and Family Events”
3. 2010 - 2015 “Changes Ahead”
4. 2015 - 2020 “Community
Schools Scale-Up”
5. Learn More: Additional
Resources

1998-2001

“The Beginnings”

- 1998 - Representatives of five East Hillside organizations attended the first in a three-year series of workshops entitled “Building Collective Community Leadership.”
- 1998 - Grant Community School is the first Full-Service Community School in Minnesota
- 1999 - First “Steps to the Future” Powwow Family Event
- 2001 - Grant Community School Collaborative is established as a 501(c)3



The Grant Community School was originally created to address inequities within the Hillside neighborhood school.

87% of Grant Community School Collaborative program participants were classified as low/moderate income (HUD). Students of color in the Duluth region consistently perform below the national and regional average, and Nettleton, soon to merge with Grant to become Myers-Wilkins, had a student of color population of 52%.



So, in **1998** five organizations in the East Hillside neighborhood attended the first in a three-year series of workshops sponsored by MN Department of Education entitled "Building Collective Community Leadership." Those organizations were the College of St. Scholastica, East Hillside Community Club, East Hillside Patch, Grant Elementary School, and YWCA of Duluth.

Grant Community School Collaborative (GCSC) was formalized as a 501(c)(3) in 2001.



In 1998 Grant Elementary had their first Powwow. This annual event first started when the PTA recognized they were not engaging all their families.

After talking with parents of American Indian students at the school, they decided to plan a Powwow together that would invite the community and families of the school to enjoy in this family event.

“Steps to the Future” Powwow *(Pictured above, “Steps to the Future” Powwow 2019)*

2001-2010

“After-School/Summer Program and Family Events”

- After-school and summer programs established at Grant Elementary School
- Family events held 6-8 times throughout the school year
- 2010 - Merger of Grant and Nettleton Schools. For one year, program occurred at both sites and students had the opportunity to travel between schools.

Families Gave Input

In 1998, a door-to-door survey was conducted. Families were asked about their needs. Over 78% of respondents reported a need for quality after-school and summer programs for children and youth.

The five organizations from the “Building Collective Community Leadership” workshops came together to organize, with very little funding, after-school and summer programs at Grant Elementary School. Those programs are listed at right.

Original Programs

- **Hillside Youth Theater**
- **Imagination Station** - Afternoon summer enrichment program
- **Compass** - Academic after-school and summer program
- **Terrific Tuesdays/Thursday Thrillz** - Enrichment after-school clubs
- **Girl Power!**



2010-2015

“Changes Ahead”

- 2010 - Merger of Grant and Nettleton Schools
- 2013 - Myers-Wilkins Elementary School is open for enrollment and Grant Community School Collaborative changes name to Myers-Wilkins Community School Collaborative
- 2014 & 2015 - Focus groups were created to expand community schools at Lincoln Park and Denfeld

The path to expansion from K-5 to K-12

Collaborative staff, partners, families, and students advocated for Federal Every Student Succeeds Act ([ESSA](#)) funding to support Full-Service Community School planning and implementation grants from the MN Dept of Education.

Lincoln Park Middle School and Denfeld High School are identified as highest priority for expanding this model because their attendance areas include the highest incidence of poverty in the district and would provide a K-12 pathway of community schools for those with highest needs. They were both granted funds.

[GrayHall LLP](#), a Black-women-owned consulting firm, was hired to organize, facilitate, and compile a wide sample of focus group data from students, families, school staff, and community members to begin the community school development at new sites.

These community-building events also provided outreach for potential site team members, leading to development of FSCS leadership teams at each site. These leadership teams then used the data from the focus groups and school data to create their site plans and hire community school coordinators.



2015-2020

“Community School Scale-Up”

- 2016 - Lincoln Park Middle School awarded Mn Dept of Education grant to hire a community school coordinator
- **2018 - Myers Wilkins Community School Collaborative changed its name to the Duluth Community School Collaborative**
- 2018 - Denfeld Site Coordinator was hired
- 2019 - Community Health Coordinator serves K-12 with focus on increasing attendance
- 2020 - Director of Programs position developed at DCSC to oversee scale-up and lead the intermediary

Duluth Community Schools System: Staff Positions at Site & K-12 Levels

K-12
Roles

DCSC Agency
Administrator

DCSC
Director of
Programs

DCSC
Community
Health
Coordinator

ISD709
Partnership

School
Specific
Roles

FSCS Coordinator

FSCS Coordinator

FSCS Coordinator



**Myers-Wilkins
Elementary**



School Principals

K-5 Myers Wilkins Elementary

6-8 Lincoln Park Middle School

9-12 Denfeld High School



Learn More: Additional Resources



**Duluth Community
School Collaborative**

- [History of Myers-Wilkins Community School Collaborative- E-Learning Modules](#)
- [1997-2014 Myers Wilkins Community School Highlights](#)
- [Duluth News Tribune article about increasing community schools in Duluth](#)
- [Myers-Wilkins Community School Collaborative Changemakers](#)
- [School as a Center of Community](#)
- [Duluth Community School Collaborative](#)



The 4 Pillars of Full-Service Community Schools

Module 3 of 4



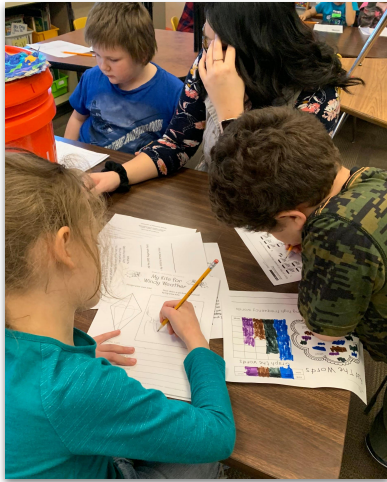
**Duluth Community
School Collaborative**

1. Integrated Student Supports
 2. Expanded and Enriched Learning Opportunities
 3. Family and Community Engagement
 4. Collaborative Leadership and Practices
 5. Learn More: Additional Resources
-

Integrated Student Supports

Caring for the Whole Child

- Academic and social emotional supports and services
- Building trusting relationships
- Coordination of support services including medical, dental, mental health, and nutrition



Academic and social-emotional supports/resources

Myers-Wilkins after-school Compass class brings in volunteers that are positive adult role models and help them with their homework.

Pictured: 1st and 2nd grade Compass Homework time



Building Trusting Relationships

A partnership between St. Louis County Public Health and LPMS provide social-emotional support and resources during and after school. *Pictured here: LPMS students, teacher, and SLC Public Health Nurse build safe and trusting relationships with each other within the Fall 2019 After-School Mindfulness Club*



Coordination of support services including: dental, medical, mental health, & nutrition

Denfeld provided 35 dental cleanings and screenings for free during the school day fall 2019.

Site coordinators meet monthly with school nurses and community health coordinator to align services and systems for families.

Expanded and Enriched Learning Opportunities

Expanding the Horizons of Learning

- Partnerships to enrich learning during the school day
- Accessible, free youth development programming



Partnerships to enrich learning during the school day

A variety of community organizations partner with Lincoln Park Middle School to offer hands-on health and wellness-related learning opportunities during the school-day.

Pictured: LPMS 8th graders enjoy berry spinach smoothies and carrot hummus with fresh veggies after preparing these recipes with Farm to School during Health class.



Accessible, free community youth development programming

After-school programming is part of the model at all three schools.

Pictured: The Whole Foods Co-op presented healthy recipes to the Myers-Wilkins Compass after-school classes.



Family and Community Engagement

Building Relationships

- Free events & classes for community
- Building trusting relationships and authentic partnerships
- Cross-sector collaboration and stakeholder alignment for shared vision



Free Events & Classes for Community

The Myers-Wilkins Powwow has been hosted in hillside for over 20 years, lead by parents and staff of the school.

Pictured: Fall 2019 Powwow. Dancers pose in their regalia



Build Trusting Relationships and Authentic Partnerships

In 2019-20 Denfeld revitalized its Black Student Association, participants of which lead a Black History family night co-hosted by all 3 schools and included participation by multiple community based youth development organizations and families.



Cross Sector Collaboration and Stakeholder Alignment for Shared Vision

Lincoln Park Middle School families, staff, and community partners worked together to pilot a school food pantry in February 2020. This place-based food access strategy is connected to broader community health efforts. *Pictured: Lincoln Park Middle School students help organize and distribute food just prior to COVID-19 school building closures*

Collaborative Leadership and Practices

Working Together to Realize a Shared Vision

- Youth voice and leadership
- Leadership teams
- Professional development for school staff and community
- Ongoing communication between stakeholders

Youth Voice and Leadership



Community Leadership at Our Schools: Men as Peacemakers' Girls Group and YWCA Girl Power participants at LPMS and Denfeld worked in partnership with community adults both during the school day and in the community to plan, promote, and lead the 2020 Twin Ports MLK March and Rally!



Leadership Teams



Denfeld began its FSCS youth leadership team in 2019-20 and began integrating these youth leaders into their FSCS site team meetings.

A portion of the Denfeld FSCS leadership team pictured above includes FSCS coordinator, youth leaders, community partner org representative, parent, community health coordinator, principal, teacher/union representative. Note: some have overlapping roles as parents or community partners

Professional development for school staff and community



Twenty white Denfeld teachers & staff participated in Humanize My Hoodie Ally training in 2019 with Dr Jason Sole in order to begin to recognize and address racial biases in school discipline.



Ongoing open communication between stakeholders



FSCS Coordinators participate as part of the Duluth Youth Agency Coalition (DYAC) to stay connected to partners and families through community-based programs.

In 2018 and 2019 the DYAC summer youth worker training was hosted at Denfeld.

Pictured speaker: Duncan Gregory, Bethany Crisis Shelter

Learn More: Additional Resources

- [Community Schools Playbook](#)
- [Dual Capacity Framework for Family-School Partnership](#)



Join Us: Collaborative Leadership

Module 4 of 4



**Duluth Community
School Collaborative**

1. Scaling Up
2. Collaborative Leadership Structure
3. Ways to Support
4. Contact Us
5. Learn More: Additional Resources

At the Duluth Community School Collaborative, we are scaling up in a big way.

- We are building a results-based vision of being a whole community where learning happens.
- We are establishing unique pre-k through 12th grade data and evaluation systems to ensure all our work helps young people achieve their highest potential.
- We are aligning our structures, programs, services, fundraising, and resources.
- **We are building a system that creates the conditions for families, schools, students, and community to effectively work together to achieve this vision.**

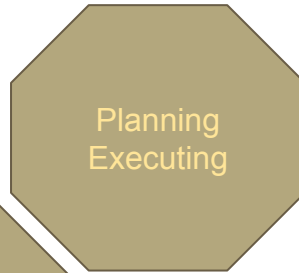


Collaborative Leadership Structure: Join Us!

Community Wide
Leadership Team



School Site
Leadership Team



DCSC:
Intermediary
Leadership



Community Wide Leadership Team:

Students, Families, & Residents
Nonprofit Leaders
Higher Education Leaders
Philanthropies & Businesses
Public Agencies & Local Government
School District Leaders
Community & Faith-Based Agencies
Unions

[Click for more
detail on building
a scaled-up
system](#)

School Site Leadership Team:

Students, Families, & Residents
Teachers & School Staff
Community Partners
Principal
Site Coordinator
Union Representatives

DCSC Board of Directors:

Students, Families, & Residents
Nonprofit Professionals
Business Leaders
Government Leaders
Those interested in nonprofit governance

Not ready to join a team quite yet?

Give

- *Communicate* your input in a message, call, or visit with our site coordinators
- *Volunteer* your time at one of our schools
- *Donate* supplies to our programs
- *Contribute* financially to support our work

Act

- *Join* our Facebook Group for Family and Community Engagement
- *Subscribe* to our DCSC Blog
- *Attend* our family and community events
- *Connect* our site coordinators to your networks (*businesses, community orgs, faith communities, etc*)

Advocate

- *Learn* more about the community schools model
- *Share* our content on social media
- *Sign up* for our action alerts mailing list
- *Speak up* at school board & community meetings about why community schools are important to you



Have ideas? Questions? Want to partner with us? Contact Us!

Full Service Community School Site Coordinators

Myers-Wilkins Elementary School

Danielle (Dani) Smilanich
nd.danielle.smilanich@isd709.org

Lincoln Park Middle School

Rachel Thapa
rachel.thapa@isd709.org

Denfeld High School

Cortnie Bain
nd.cortnie.bain@isd709.org

DCSC Community Health Coordinator

Alisha Bliss
nd.alisha.bliss@isd709.org

DCSC Director of Programs

Angel Nustad-Peluso
nd.angelina.peluso@isd709.org

DCSC Administrator

Katherine Mueller
kmueller@duluthcsc.org



Learn More: Additional Resources

- [Key Community School Functions](#)
- [A Framework for Scale-Up of Community Schools](#)
- [Community school system benchmarks](#)
- [Policies that Advance Community Schools](#)
- [6 Core Functions of an Intermediary Organization: The Work of the Collaborative](#)

